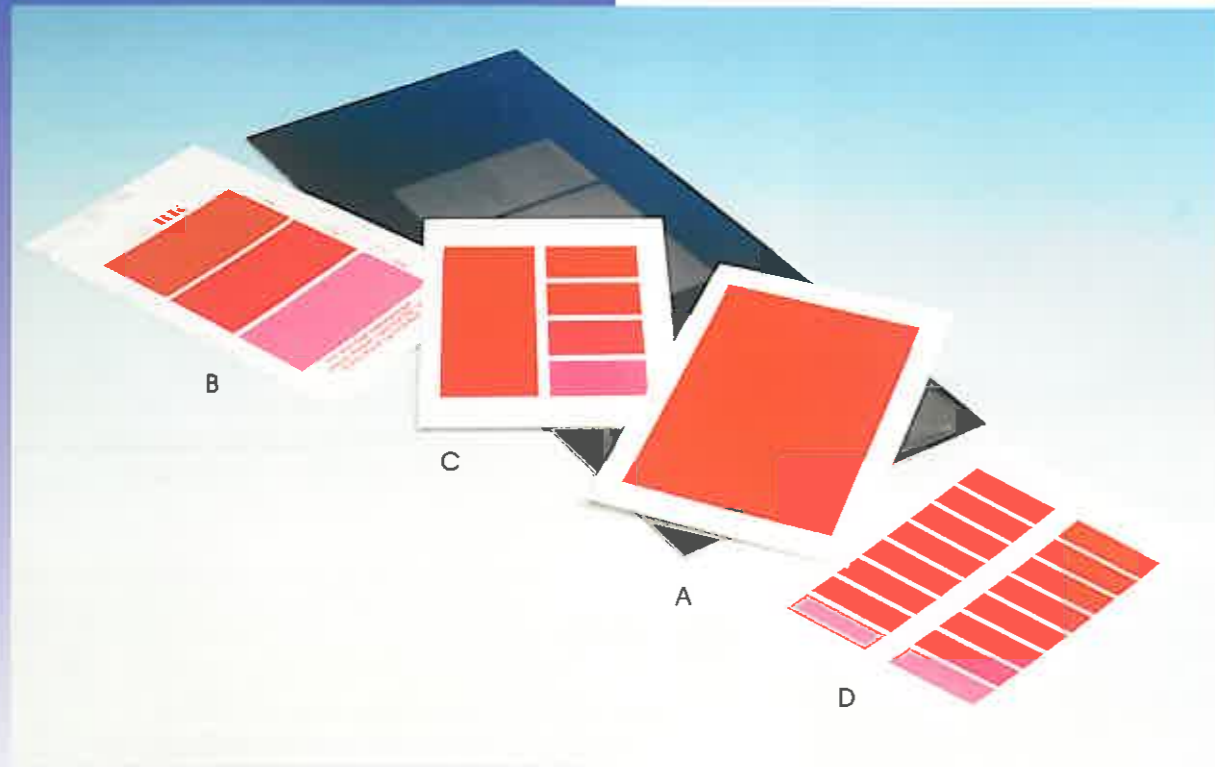


The first name in sample preparation equipment

K PRINTING PROOFER



Printing Plates

The illustration shows a typical plate together with various proofs obtained with standard plates, details of which are as follows:

- A** Solid Area Plate
100 lines/inch (40 lines/cm) Density: 100%
150 lines/inch (60 lines/cm) Density: 100%
200 lines/inch (80 lines/cm) Density: 60%
- B** Single 3 Wedge Plate
150 lines/inch (60 lines/cm) Density:
100-80-60%
Please note the proof shown has a typical company logo and address added.
- C** 1 + 4 Wedge Plate
150 lines/inch (60 lines/cm)
Densities, half area 90% and adjacent step wedge 100-90-80-70%
- D** Double 8 Wedge Plate
150 lines/inch (60 lines/cm)
Densities, 100-95-90-85-80-75-70-60%



ERICHSEN

ERICHSEN GmbH & Co. KG
Am Iserbach 14 | 58675 Hemer | Germany
Tel: +49(0)2372-9683-0 | Fax: +49(0)2372-6430

RK PrintCoat Instruments Ltd.
Lillington, Royston, Herts SG8 0GZ United Kingdom
Tel: +44 (0)1763 852187 Fax: +44 (0)1763 852502
E-mail: sales@rkprint.com
www.rkprint.com

The first name in sample preparation equipment



K PRINTING PROOFER



Above: K Printing Proofer Gravure

Below: Detail of the K Printing Proofer Flexo Head



High quality proofs using gravure, gravure-offset or flexo inks are produced instantly using the K Printing Proofer. Featuring electronically engraved printing plates and variable printing speeds of up to 40m/min, this is an essential tool for all those involved in the manufacturing or use of liquid inks. Ideal for R & D and computer colour matching data, quality control and presentation samples. The K Printing Proofer is very easy to clean and all parts are solvent resistant.

MAIN FEATURES

- Almost any flexible substrate can be printed or laminated
- Excellent printability ensured by micrometer control
- Multiple ink samples may be printed simultaneously for comparison purposes
- High printing speeds enable use of inks nearing press viscosity
- Easy to operate with a footprint of just 400 x 500mm

The first name in sample preparation equipment

K PRINTING PROOFER



GRAVURE

Ink is transferred from an electronically engraved printing plate directly onto the substrate, which is attached to the rubber impression roller. Doctor blade and roller adjustments are made via micrometers allowing repeatable settings for future tests.



FLEXO

Using the flexo head, ink is transferred from the printing plate to a plain stereo roller and then onto the substrate. Adjustments are again made by micrometers. Plain or step wedge plates are available corresponding to the various densities required for flexo printing.



GRAVURE OFFSET

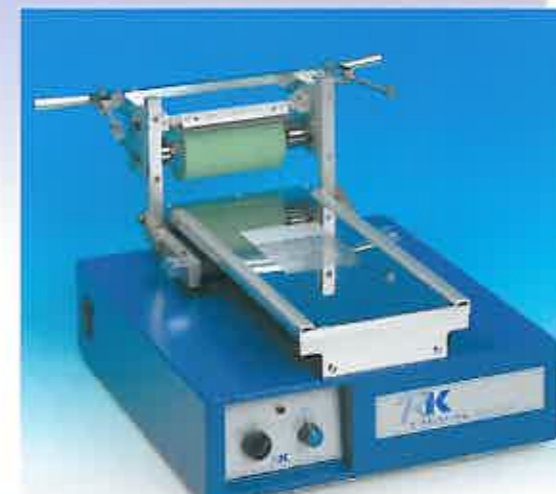
The flexo head is employed and fitted with a plain rubber roller to transfer ink from the plate to the substrate. A machine supplied with the flexo head can therefore be used for both techniques with the possible addition of an alternative stereo/offset roller and printing plate if required.



LAMINATING

Both wet and dry laminated samples can be produced on the machine using the gravure head with K-Lam laminating accessories. This includes a rubber covered bed and K-Lam bars, replacing the doctor blade in order to control adhesive coating weight. Adhesive is applied in front of the bar and the machine then coats and laminates in one operation.

Dry laminating is carried out in two phases. The adhesive is coated onto one substrate and after evaporation of the solvent, the second substrate is subsequently laminated to it.



CLEANING

The essential job of cleaning various machine components following each proofing run has been simplified by careful design. The illustration (left) shows the machine fitted with a gravure head pivoted back to the cleaning position. It can be seen that the printing plate, rollers and doctor blade are all exposed and easily accessible.

ACCESSORIES

The K Printing Proofer is available in various complete systems. Accessories include proofing paper having one gloss and one matt side in packs of 500 sheets, spare doctor blades (5 pack) and disposable plastic 3ml pipettes (500 pack).

SPECIFICATION

Footprint:	400 x 450mm
Weight:	From 21 Kgs
Drives:	Electrical (220/240 or 110/120 volts) or Pneumatic (Safe for hazardous areas)